

庆虹电子(苏州)有限公司



QingHong Electronic (SuZhou) CO., LTD.



Let's Start!

**High-Speed
Innovative
Technology
Reliable Connections**



关于庆虹

庆虹为连接器专业制造商,自身拥有产品设计、模拟分析、模具设计制造、自动装配机设计制造、射出、冲压及自动装配等能力, 及完整的质量管控系统。提供適切符合客户所需的产品与服务。

主要产品用途如下:

- 1.通讯网络
- 2.笔记本电脑及LCD面板
- 3.个人计算机及服务器
- 4.计算机外设传输线
- 5.通信交换机
6. CEM / OEM / ODM客户委托设计制造

About QingHong

QingHong owns the multi capabilities of R&D and Production as below, and have the right and good parts and supports for customer' s need. , Our connectors are supplied for system integrators, CEM, ODM or OEM partners in Desktop, LCD panel, Notebook, Server, Storage, Telecom and Datacom field. We work as development partners with our customers to design-in QingHong innovations as integral features of their systems.





生产技术能力 / Production Capability

微射出成型 Micro-Injection

精密模具设计开发及自动化生产制造能力，使用日本进口微射出成型机并搭配自制的自动化设备进行自动化成型，提高生产效率及良率。

QingHong combines mold technology with automation to optimize the production efficiency and yield rate in using Micro-Injection Machines.

自动化组装 Automation Assembly Line

自行设计全自动组装及检测机，降低人工使用量，使用模块化设计，并自行研发高速插针设备，每分钟插针数高达3000SPM，大幅提高生产效率及良率。

In-house, QingHong designs and develops the auto-assembly machine and CCD testers to lower the assembly costs and assurance the product quality. The fastest assembly speed is 3000spm/per minute.

高速冲压成型 High Speed Stamping

采用模块化模具设计开发可快速因应生产需求，并搭配进口高速冲压机生产速度可以达到每分钟2000SPM。

For high speed stamping demand, QingHong takes modulus-tooling up with high speed stamping machines, QingHong can work out 2000spm/per minute.

电镀生产 Plating Facility

拥有IN House的电镀线，可进行金及钯镍等贵金属的浸镀、刷镀及点镀，有效管控电镀质量及成本。

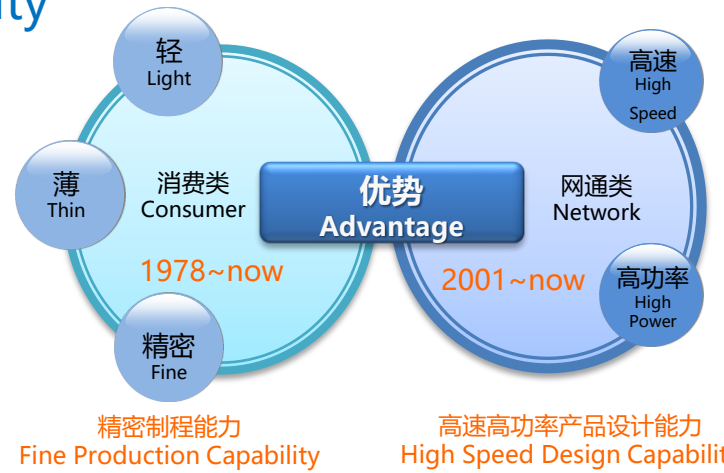
QingHong has the lead free plating lines for gold, Pd/Ni, Ni, and pure-tin plating. To control the plating cost and quality, QingHong can do different plating methods for different parts, like sink plating, brush plating and spot plating.

研发制造能力

/R&D and Production Capability

庆虹于消费产品累积了快40年的精密模具设计能力及精密生产制造管控的经验与能力，于网通产品累积了高速及高功率产品设计的实力。以此两项优势，庆虹得以因应时代趋势，在讯号要求密度愈高，产品微小化减少使用空间之下，庆虹发挥所长，针对客户需求提供更好的解决方案。

Qinghong has accumulated nearly 40 years of precision mold design capabilities and precision manufacturing control experience and capabilities in consumer products, and has accumulated high-speed and high-power product design capabilities in Netcom products. With these two advantages, Qinghong is able to respond to the trend of the trend, the higher signal density, the smaller product, the less the usage of space, Qinghong provides the better solutions for customer needs.



2001

- 与H客户配合 2.0mm背板连接器开发 (1GHz)

庆虹是H国内第一家引进背板连接器替代厂商。

2007~

- 高速连接器& PCB设计、仿真研究开发
- 产学合作,高速技术人材培育

2012

- 2012年之前已可提供 3.25GHz, 6.25GHz 背板连接器。
- 2012年开始进行 12GHz & 12Gbps多 项产品生产制造供应。

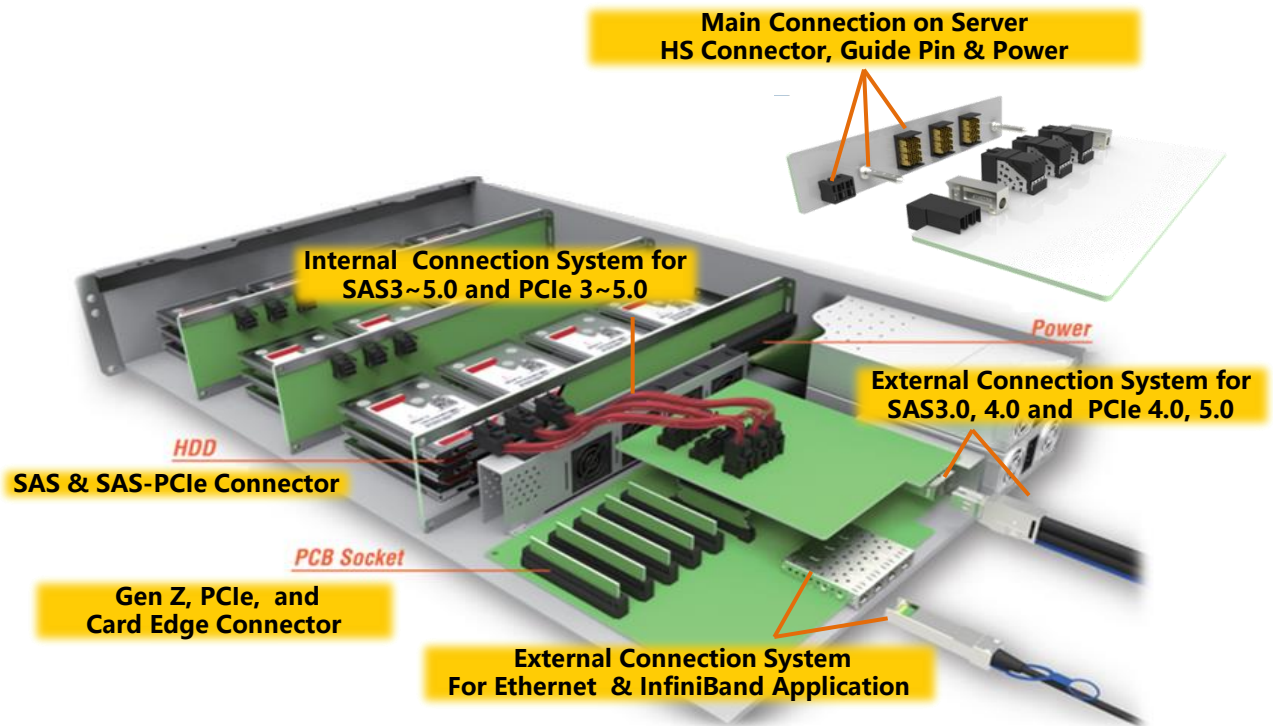
2016~2018

- 开始进行 24Gbps & 25GHz 多项产品制造供应
- 2mm+兼容现有界面, 从5GHz ↗ 10GHz
- Pcie & Sas 系列量产

2019~2023

- 完成56G~112G 背板连接器量产
- 与客户协同开发 自定义接口方案
- 储备112~224G 的方案能力

Contents



Connectors

- | | | | |
|---|--|---|--|
| <p>◆ Internal Connection System</p> <ul style="list-style-type: none"> • SAS • SAS-PCIe • MINI SAS HD • SlimSAS • MCIO • UBC  | <p>◆ External Connection System</p> <ul style="list-style-type: none"> • MINI SAS HD Connector • SFP, SFP+, S28, S56  | <p>◆ PCB Socket</p> <ul style="list-style-type: none"> • Gen Z • PCIe • Card Edge  | <p>◆ Backplane Conn.</p> <ul style="list-style-type: none"> • Victor • STAR-HD • Z-wall • X-wall  |
|---|--|---|--|

Cables

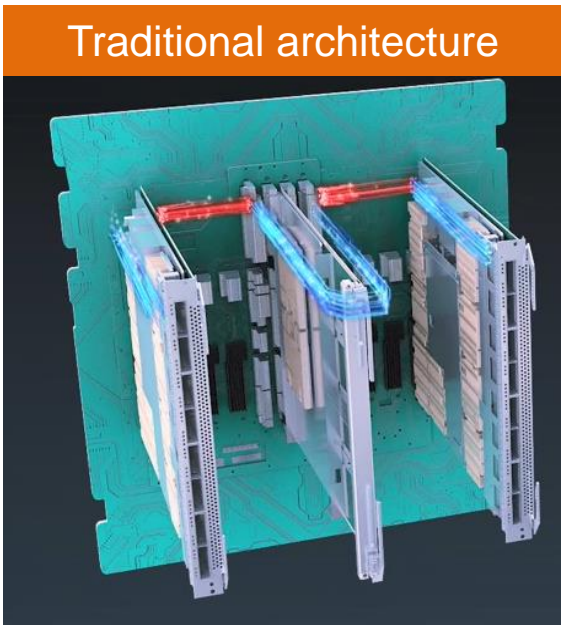
- ◆ Internal Connection System
- SAS
 - SAS-PCIe
 - MINI SAS HD
 - SlimSAS
 - PCIe
 - Gen Z
 - MCIO
 - UBC
- 

Others

- ◆ Guide Pin Series
- 



Contents



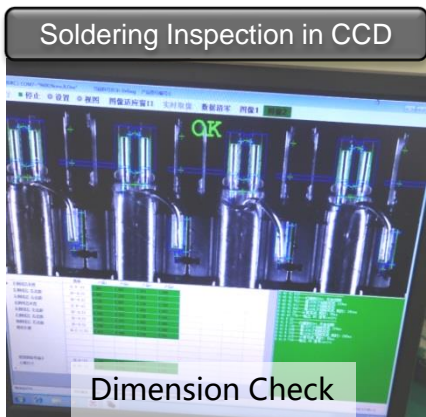
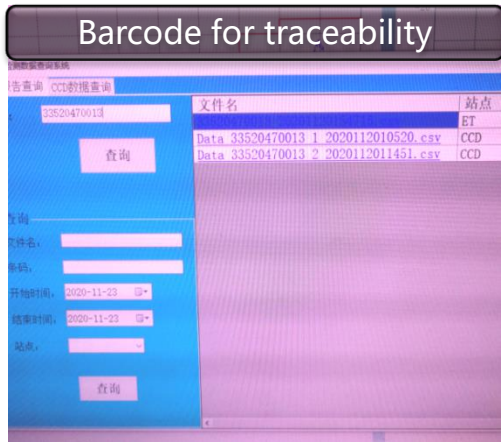
Traditional architecture



Cabled Backplane architecture

Quoted from FusionPod web

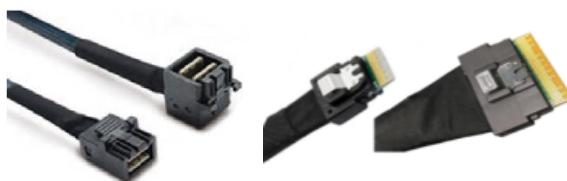
100% Auto Inspection System to instead of manual test.
Traceability for testing record for each cable.





◆ Internal Connection System

- SAS
- MINI SAS HD
- SlimSAS
- MCIO
- PCIe
- Gen Z
- UB-SIG
(6G ~ 32 G)



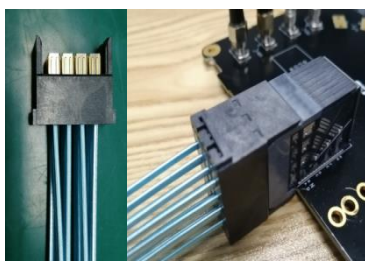
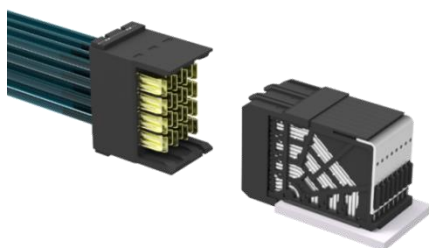
◆ External Connection System

- MINI SAS HD
- SFP (DD)
- QSFP (DD)
- DSFP
(10G ~ 112G)



◆ High Speed Cable Module

- Storage
- External Cable
- Fly Cable





庆虹电子（苏州）有限公司

中国江苏省昆山市玉山镇晨丰东路158号

邮编：215300

电话：002-86-0512-5701-3336

传真：002-86-0512-5701-3330

邮箱：sales@ksstarconn.com

QingHong Electronic (SuZhou) CO., LTD.

No. 158 Chengfeng East Rd., Yushan Town,
Kunshan City, JiangSu Province, PRC

Tel: +86-0512-5701-3336

Fax: +86-0512-5701-3330



Let's Start!